

How to get to Rubberlast

From the South

1. Follow the M1 north towards Leeds.
2. When you pass the M62 junction, take one of the three right-hand lanes for the M621.
3. Exit the M621 at Junction 1 (this is the junction after you pass the football ground), taking the right-hand lane on the exit slip road.
4. At the roundabout, take the third exit (A6110 Ring Road). You need to take the right-hand lane and turn right at the lights.
5. You are now on Gelderd Road. Follow the road going straight ahead at the mini-roundabout, under the railway bridge and take the second turning on the right which is just past the Rolls Royce & Aston Martin dealership (on your left).
6. Follow the road for 100m and take the left into Gelderd Trading Estate. Rubberlast is immediately on your left.

From the North

1. Follow the A1 south and take the A64 westbound towards Leeds City Centre.
2. Follow the A64, which becomes the A58 (M) once it gets to Leeds City Centre.
3. Follow this road and you should see Yorkshire Post Newspapers on your left as you go over a bridge.
4. Where the slip road merges from the left, take the left-hand lane.
5. At the roundabout, take the first exit and after approx. 200m take the exit slip road (Dunelm Mill will be on your left).
6. At the roundabout, take the third exit turning right.
7. At the next roundabout take the second exit, turning right.
8. You will go over a bridge and the Toyota dealership will be on your left.
9. At the next roundabout, take the first exit.
10. You are now on Gelderd Road. After approx. 500m, take the first left, which is just past Alba Tyres (on your right).
11. Follow the road for 100m and take the left into Gelderd Trading Estate. Rubberlast is immediately on your left.

From the East

From the A64 westbound follow the instructions from the **North**, beginning with step **2**.

1. Alternatively, follow the M62 westbound and exit at the M1.
2. Follow the M1 north and then follow the directions as from the **South**.

From the West

1. Alternatively, follow the M62 westbound and exit at the M1.
2. Follow the M1 north and then follow the directions as from the **South**.

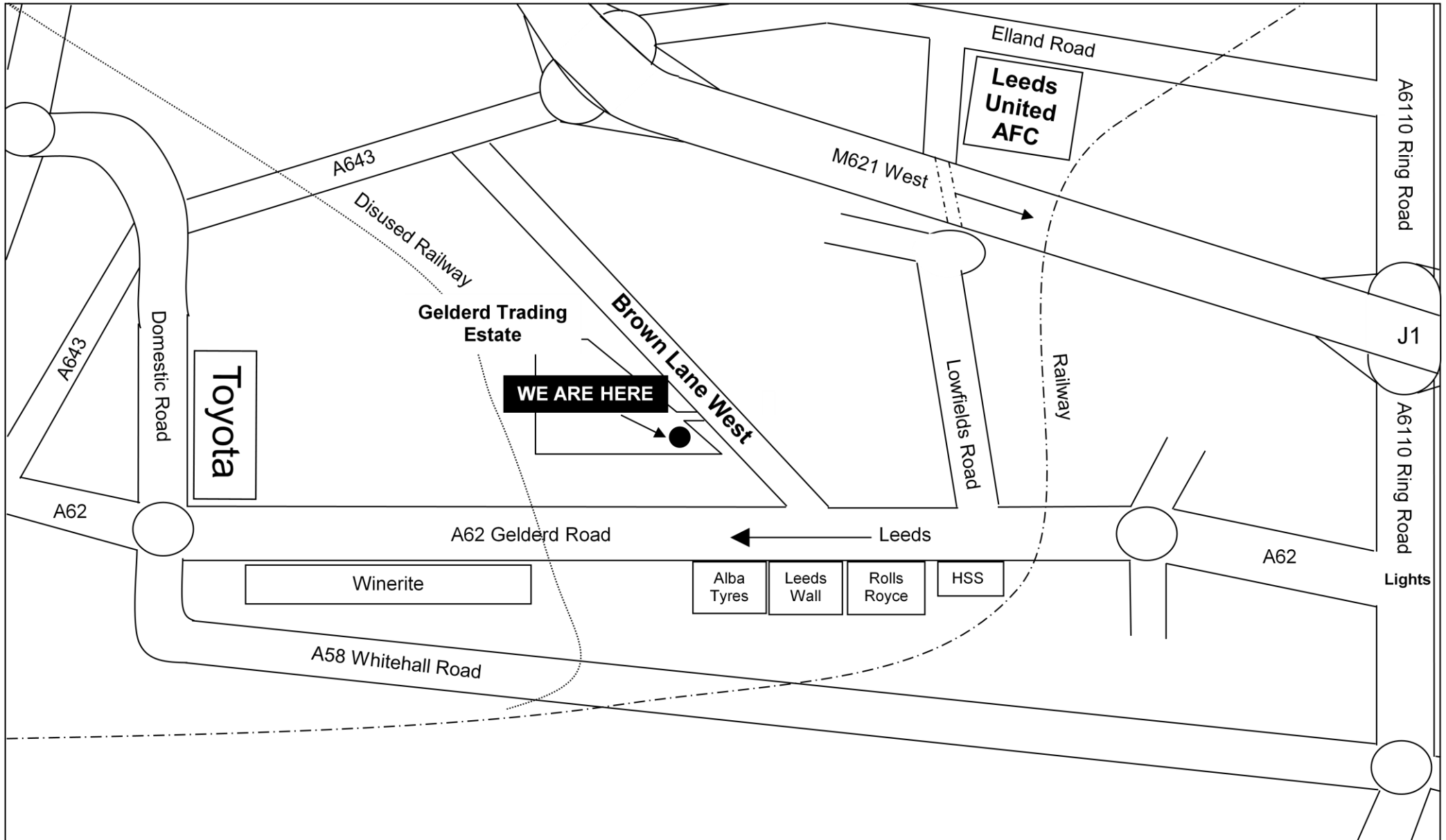
From Leeds City Centre

1. Take Aire Street out of the City Centre, accessing from City Square.
2. Follow the road and at the first roundabout, go straight ahead.
3. Follow the instructions from the **North**, beginning at step **7**.



Unit 1 Gelderd Trading Estate
Brown Lane West
Leeds
LS12 6BD
Tel: 0113 2455234 Fax: 0113 2448293

<http://www.rubberlast.com>
Email: Sales@rubberlast.com



NOT TO SCALE